



TransformAr



Mid-way through TransformAr

When we meet in Egaleo, at month 26, we are over half-way. Meanwhile, our first evaluation from the European Commission went well. We got positive feedback on the progress we made so far. It has also been made clear that we are at a turning point. Little time is left for a lot of work. A number of demanding deliverables are coming up. Confusions need to be sorted out. We also still need to answer the most challenging question we have: **“how does TransformAr demonstrate transformational adaptation”?**

THIS ISSUE

MID-WAY THROUGH TRANSFORMAR

TransformAr project coordinator Jan Cools looks back on the past months since CM4 and those ahead.

CONSORTIUM MEETINGS

TransformAr met for its fourth consortium meeting in Galicia hosted by CETMAR and FEUGA, and we are looking forward to our fifth in Egaleo.

WELCOMING NEW COLLEAGUES

Introductions are in order for our new colleagues at University of Antwerp, ACTERRA, CMCC and WRT.

REPRESENTING TRANSFORMAR, GENERAL NEWS AND PROGRESS

The TransformAr team has been busy at international conferences, collaborating with sister projects, and moving ahead with the work required from the project.

Key outcomes from the evaluation report from the European Commission

The evaluation report includes the following requirements:

- To become more concrete and operational (in terms of adaptation pathways and action plans)
- To be more explicit about our innovations.
- To make our data more easily available to and for the demonstrators.
- To hold more inclusive stakeholder workshops.
- To measure and assess our impacts.
- To use AI for translation to increase the use of projects outcomes by non-English speakers.
- To maintain our cooperation with the sister projects (REGILIENCE, ARSINOE and IMPETUS) and the Adaptation Mission Implementation Platform (MIP4Adapt project).

Expectations from demonstrators

In addition, a lot is expected too from our demonstrators - not only to implement their solutions but also to assess their impacts, and support a number of deliverables. We consider it unlikely that demonstrators can provide adequate support to fulfil all expectations, so we need to assess how to prioritise and match the resources of the technical partners to those of the demonstrators. The forthcoming tasks for which input is needed from the demonstrators are:

- Make adaptation pathways more concrete and practical (D3.7 - D3.9)
- Cost-benefit analysis of your solutions (D3.4 – D3.5 - D3.6 – D5.7)
- Bankability reports (D5.5 - D5.6)
- Monitor impacts (D5.1 - D8.4)
- Hold inclusive stakeholder workshops

Change in coordination

Our beloved Amalie will go on maternity leave (from the end of December). To support me in the coordination, a new colleague, Laura, will step in at the University of Antwerp.

Submitted deliverables between CM4 and CM5

Del. N°	Deliverable name	WP n°	Responsible participant	Type	Dissem. Level	Month due	Date submitted
D3.4.	Tools on the avoided damages and benefits per demonstrator	3	NCSR D	R	PU	M22 (July 2023)	26 July 2023
D1.4.	Beliefs towards transformational adaptation conceptual map	1	FEUGA	R	PU	M24 (Sep 2023)	6 October 2023
D1.5.	2 thematic best practice reports	1	Verhaert	R	PU	M24 (Sep 2023)	29 September 2023
D7.9.	Mid-term update of communication and dissemination plan	7	Water Europe	R	PU	M24 (Sep 2023)	29 September 2023

Deliverables to be submitted between CM5 and CM6

Del. N°	Deliverable name	WP n°	Responsible participant	Type	Dissem. Level	Month due
D5.8.	Intermediary monitoring report	5	CZU	R	PU	M24 (Sep 2023)→ extension approved Nov 2023
D2.3.	Systematic review of economic evaluation of CC and loss damage function for KCS	2	CMCC	R	PU	M24 (Sep 2023)→ extension approved Nov 2023
D2.4.	Report on full-scale socio-economic impacts of CC and TA at EU, national and sub-national levels	2	E3M	R	PU	M24 (Sep 2023) → extension approved Feb 2024
D3.6.	Replicable socio-economic impact assessment tools of transformational pathways	3	UA	R	PU	M28 (Jan 2024)
D6.2.	Costs and benefits of climate change adaptation solutions	6	CMCC	R	PU	M28 (Jan 2024)
D3.5.	Good practices and guidelines for avoiding damages and other direct costs in regional governance scale	3	NCSR	R	PU	M30 (March 2024)
D3.7.	Toolkit for adaptive action planning	3	ACTERRA	R	PU	M30 (March 2024)
D3.8.	6 region-specific portfolios of solutions	3	ACTERRA	R	PU	M30 (March 2024)

Summary of upcoming events

Event	Time and place	Link for more information
Water-Smart Cities: Navigating Climate-Resilient Sustainable Urbanization in the Digital Age	November 30 2023 online	To be confirmed by ARSINOE.
Resilient Europe: Empowering regions for climate adaptation Pathways2Resilience launch event	November 23 2023 online	More information here .
Climate governance platforms: a springboard for transformational adaptation through informed decision making	December 1 2023, 11:30 CET online	Registration and weblink to soon be shared by CMCC. First webinar of TransformAr Network on CCA.
IMPETUS Thematic Meeting: The TransformAr Playbook (ACTERRA & Verhaert)	January 19 2024, 11:30 CET online	To be confirmed.
3 rd Forum on the EU Missions Adaptation to Climate Change	May 23 2024 in Brussels, Belgium and online.	More information will be available here .

TransformAr is on its way to Egaleo, Greece!



From the 7th to the 9th of November 2023, we will gather for our fifth consortium meeting to visit and get to know our demonstrator in Egaleo. We will be hosted by the Municipality of Egaleo. You can find [the agenda](#) and a [guide for your stay](#) on the [TransformAr Sharepoint](#). A dedicated space has been created for the presenters to [upload their presentations](#). The Municipality of Egaleo has also kindly organised 2 optional visits to Delphi (on Monday the 6th of November) and the Acropolis museum (on Thursday the 9th of November).

Some key information to keep in mind:

- The **meeting will start on Tuesday 7th November morning and will end on Thursday 9th November early afternoon**;
- **Wednesday 8th afternoon will be dedicated to visiting the Egaleo demonstrator with a walking tour**;
- There are **2 optional visits** for CM5:
 - **1st one is the day-trip to Delphi on Monday 6th November**, for which interested participants already answered a survey (same one as the attendance survey circulated this summer). Please make sure you [read the dedicated info-pack which gathers all information about the day in Delphi](#);
 - **2nd one is the afternoon visit to Acropolis Museum on Thursday 9th November**, for which we asked you to answer a new survey directly included in the agenda. If you have not already done so, **please make sure you fill in [this survey](#) as soon as possible**.
 - Please note that if you have questions on the visits/logistics, you can write to Dimitris and Evrydiki from the Egaleo team directly (tzempelikos@egaleo.gr; e.pavliidi@egaleo.gr).

Partners not attending in-person will be able to **follow the hybrid sessions [online using this weblink](#)**.

TransformAr in Galicia



From the 10th to the 12th of May 2023, we visited one of TransformAr's 6 demonstrators for our third consortium meeting in Santiago de Compostela, Spain. Hosted and guided by FEUGA and CETMAR, we were introduced to our demonstrator with a series of presentations that provided an overview of Galician efforts to adapt to climate change and the main risks it faces. These presentations were given by Paloma Rueda Crespo – CETMAR's general director, and the director of Environmental Quality, Sustainability and Climate Change at CETMAR - Sagrario Pérez. Isaac Gómez Piñeiro from Xunta de Galicia and the scientific experts Pedro Montero and Xosé Antón Álvarez Salgado also presented their perspectives. The Xunta de Galicia highlighted the importance of the need to develop tools and initiatives that help to understand the effects of climate change and how to reverse its consequences. Political instruments were showcased: a multi-sectoral action plan, the "Galician Climate Alliance" for the promotion and establishment of adaptation and mitigation measures, and the establishment of the "Galician Climate Law" by 2030.



Lucia Fraga (CETMAR) introduced TransformAr



TransformAr learning how to work as clam collectors

Through TransformAr, Galicia will test solutions for clam, mussel and shellfish aquaculture. We got to learn first-hand about the clam, mussel and shellfish sectors and the risks they face by climate change from people working in the sectors through our visits organised by our Galician demonstrator. As part of the solutions, we saw the impact of digitalisation in improving the management and adaptation of mussel production, monitoring in real time mussel rafts equipped with sensors.

The meeting also gave us the opportunity to discuss progress of the past months and challenges to come. Discussions were held on the upcoming periodic report finalisation, deliverables – from public acceptance to best practices, the launch of the TransformAr Network on climate change adaptation, and better coordinating work on sensors, apps and monitoring, as well as those focusing on economic impacts. The 6 demonstrators also presented on solutions' implementation. [Minutes](#) can be found on the TransformAr Sharepoint.



Welcome to our new TransformAr colleagues!

Laura Enthoven Senior Researcher at the University of Antwerp



Laura Enthoven is a senior researcher at the Faculty of Business Economics at the University of Antwerp. She recently completed her PhD in agricultural economics at the UCLouvain (Belgium). During her PhD she focused on the role of certification and coordination in local food value chains, with case studies in Belgium, Vietnam, and Peru. She also obtained a master's degree in Marine Systems and Policies from the University of Edinburgh (2018), and master's degree in Environmental Bioengineering from UCLouvain (2015).

Before starting her PhD, Laura worked for six months as an officer at the Fisheries Areas Network (FARNET) Unit, providing technical assistance to DG Mare (European Commission), local authorities and Fisheries Local Action Groups to ensure the good implementation of community-led local development in EU Member States. Prior to that, she worked for 18 months for a marine consultancy company based in London (MRAG). As part of her job, she conducted several studies leading to advice in marine resources management (mainly in fisheries and aquaculture); and traceability audits in fisheries supply chains. Laura is fluent in French, English, Spanish and Dutch.

As part of TransformAr, Laura will be involved in WP4, WP5, WP6 and WP8.

Email: Laura.Enthoven@uantwerpen.be **LinkedIn:** [Laura Enthoven](#)

Sami Porko-Beugnet Resilience and Climate Finance Consultant at Acterra



Sami Porko-Beugnet is a French-Finnish national who joined Acterra in September, as a resilience and climate finance consultant.

He recently completed a Master's in socio-economics at the London School of Economics, with a major in climate and economic risk. His Master's thesis focused on central banks and the transition risk. Moreover, Sami has a degree in Political Science (BA) and in Social Sciences (MSc) earned from Sciences Po Lille.

He is joining the TransformAr project on behalf of Acterra, to support the operationalization of the adaptive pathways in the framework of WP3 and to support the Guadeloupean demonstrator during the testing phase of the Local Adaptation Fund as part of WP4.

Email: samuel.porkobeugnet@acterraconsult.com **LinkedIn:** [Sami Porko-Beugnet](#)

Andrea Rivosecchi Research Associate at CMCC



Andrea is a Research Associate at the "Impacts on Agriculture, Forests and Ecosystem Services" division of CMCC in Sassari. He graduated with a BSc in Environmental Geoscience from the University of Edinburgh in 2018 and pursued an MSc in Environmental Technology at Imperial College London in 2022.

His research focuses on climate change modelling, with a strong interest in extreme weather events and climate risk adaptation strategies. For his MSc thesis, he investigated coastal and pluvial flood risk in the tropical, urban context of Kingston (Jamaica), identifying areas of highest exposure to inform relevant stakeholders on the adaptation measures to be prioritised.

In the TransformAr project, he is part of WP2 and is contributing to the analysis of data on agriculture and fisheries at the continental scale.

Email: andrea.rivosecchi@cmcc.it **LinkedIn:** [Andrea Rivosecchi](#)

Emily Widdecombe Natural Capital Project Manager at WRT



Emily has joined the Land Team at the Westcountry Rivers Trust as a Natural Capital Project Manager. Building on her experience managing interdisciplinary scientific research projects across environmental economics, social science and ecosystem services, Emily is keen to apply her knowledge and experience as part of the TransformAr project.

Email: emily.widdecombe@wrt.org.uk **LinkedIn:** [Emily Widdecombe](#)

Representing TransformAr

ECCA 2023



Written by [Regilience](#)

The European Climate Change Adaptation Conference (ECCA 2023) (held in Dublin, Ireland from 20-22 June 2023) provided a platform for showcasing various tools and approaches aimed at bolstering climate resilience. TransformAr was featured in two sessions, highlighting the project efforts to supporting European regions and communities in their adaptation efforts.

Session 1: Extreme Events: Tools for Climate Resilience

Jan Cools took part in the panel together with the coordinators of **REACHOUT**, **Pathways2Resilience**, **IMPETUS**, **ARSINOE**, and **REGILIENCE** to discuss existing tools and approaches for climate resilience, focusing on climate risk assessment, vulnerability analysis, and adaptation pathways. Several noteworthy findings emerged:

1) The Adaptation Mission, an ambitious initiative, aims to accelerate and enhance adaptation processes in European regions and communities. The collaborative efforts of multiple projects provide actionable knowledge and tools crucial for successful adaptation. Cooperation between projects is key to achieving desired outcomes.

2) Technical assistance plays a vital role in helping public administrations within regions and communities understand and select appropriate tools for their adaptation pathways. While tools are essential, people's active involvement and engagement are fundamental to driving successful implementation.

3) Social science research is crucial in promoting equity in climate adaptation. More data and assessments are needed to ensure that no one is left behind, with a focus on adequate pricing policies for key resources like water and energy and improved social vulnerability assessments.

4) Projects such as REACHOUT, REGILIENCE, Pathways2Resilience, and the Mission Implementation Platform for Adaptation to Climate Change (MIP4Adapt) are working together to compile and structure available reliable tools. Their aim is to make these tools more accessible to regions and communities, reducing confusion and ensuring flexibility and adaptability. Assessing interoperability and relations across the adaptation pathway is also an important aspect.

Session 2: Demonstration of Climate Adaptation Tools (21st of June, 2023)

This session showcased climate services-tools developed in various Green Deal projects, including TransformAr. **Stéphane Simonet** from **ACTERRA** presented the **TransformAr Playbook for Transformational Adaptation**. The focus was on supporting urban and regional adaptation, with [11 tools](#) in total demonstrated and discussions held on the status and challenges of climate service development.

The REGILIENCE Autumn Training Course on Climate Risk Management

[The Autumn Training Course “Climate Risk Management – Strategies and Tools for Regional and Local Challenges”](#) held in Lisbon, Portugal between the 11th and 17th of October 2023 represented an initiative promoted by the [University of Lisbon](#) and the [REGILIENCE](#) project, with the support of the European Union under the [NextGenerationEU Recovery and Resilience Facility](#) and the [EU Mission on Adaptation to Climate Change](#). It was organised in-line with the 10th anniversary edition of EURESFO.

Lucía Fraga from **CETMAR** represented TransformAr and gave a presentation focused on our Galicia demonstrator and specifically their use of the Playbook for Transformational Adaptation for co-designing a roadmap for climate change adaptation in the mussel aquaculture and clam harvesting sectors in Galicia.



EURESFO 2023

Jan Cools represented TransformAr at this year's **European Urban Resilience Forum (EURESFO)**, which celebrated its 10th anniversary. The programme revolved around three main themes: i) The Governance of the New Extremes: Managing and Funding Climate Adaptation in Europe, ii) Challenging Knowledge and Innovation: Accelerating a Resilient and Just Transformation, and iii) Mainstreaming Solutions for a Just Transformative Pathway: An Integrated Approach to Climate Resilience.

EURESFO presented a good opportunity to discuss progress with colleagues from REGILIENCE. [REGILIENCE put together a collaborative session](#) on how regions approached resilience in the past until today, and what the future of resilience in regions looks like.



TransformAr's advisory board member Linda Romanovska spoke on sustainable finance for urban resilience to climate change.



More information and [recaps of the sessions can be found here.](#)

Climate change adaptation in the outermost regions in the EU

In June 2023, **Marie-Edith Vincennes from ADEME Guadeloupe** took part in the final event of the Exchange Programme on Climate Change Adaptation in the Outermost Regions of the EU in Las Palmas, Canary islands. The event was hosted by the Directorate-General for Regional and Urban Policy (DG REGIO).

This was an opportunity for ADEME to learn about adaptation actions underway on water management, biodiversity or coastal erosion in different outermost regions (Madeira, Canary Islands, Seychelles, Maurice, Guyana...).

The team that worked on this exchange programme will soon share a compendium with some of the good practices undertaken in recent years in the European Outermost regions. The adaptation solutions developed and tested in Guadeloupe as part of the TransformAr project will be highlighted in this document. We note the importance for the outermost regions to capitalise on the results of European projects in order to facilitate the replication of successful actions.



How can NBS support climate change adaptation and mitigation in the water sector? An illustration with urban stormwater management

This [ARSINOE seminar](#) – held on June 1st 2023 – discussed perspectives and opportunities given by nature-based solutions to contribute to addressing water management and climate change challenges from a systemic point of view.



Sanna Varis from the City of Lappeenranta took part in the panel and [discussed how the use of nature-based solutions in urban stormwater management](#) increases both the diversity and comfort of the urban environment, as well as resilience and adaptation to the challenges of climate change. The most important lesson learnt in using NBS in city of Lappeenranta is that it requires collaboration. Stakeholders should be engaged at an early stage: cooperation, increasing understanding and sharing information is of primary importance from the beginning of planning process.

Jan Cools presented [‘A business model for greener, more resilient cities’](#). A business model was developed in a recently finished project [Nature Smart Cities](#) to support local authorities in assessing the multi-benefits of nature-based solutions, which include stormwater management. In TransformAr, we will assess how the outcomes can support the implementation of transformational adaptation.

General news

MIP4Adapt Newsletter

Keep up to date with the latest news of the EU Mission on Adaptation to Climate Change. TransformAr and many other EU Mission projects collaborate with the Mission Implementation Platform (MIP4ADAPT) to reach Mission's goals to support transformational adaptation in Europe. You can find [October's newsletter here](#), which also contains information on how to subscribe to upcoming issues.



The Climate Resilience Post

This Climate Resilience Post is a joint activity from 4 Horizon 2020 projects supporting the EU Mission: REGILIENCE, ARSINOE, IMPETUS and TransformAr, coming together to share their latest activities, interventions and opportunities related to climate change, adaptation and resilience. You can find the [latest issue here](#), and subscribe [here](#).



Egaleo Municipality Inspires a New Environmental Culture

At the end of May 2023, the municipality of Egaleo participated in the Attica Green Expo, with the slogan "We change our city! We invest in social innovation and sustainable development." The Municipality presented to visitors all the innovative actions and programmes that are in progress or have been completed and aim, among other things, to shape a new environmental culture.

In the presence of Mayor Yiannis Ghikas, children from the 11th and 20th primary school of Egaleo toured the exhibition by participating in interactive educational environmental programmes.

At the stand of the Municipality, **Ioannis Zarikos (NCSR)** showed the pupils how an environmental station operates, similar to those installed in various parts of the city as part of TransformAr, and gave a short presentation on climate change and its negative effects. As a Municipal Authority, the attention is focused on raising awareness among citizens and especially young people.



Gjøvik workshops

In June 2023, our replicator territory - the municipality of Gjøvik - organised the series of workshops for co-construction of adaptation pathways, following the methodology defined in the [Playbook for Transformational Adaptation](#). Participants from different departments of the municipality, the Innlandet County Council and other local stakeholders met to better understand the context, impacts and risk faced by the city, and eventually propose solutions. The main climate risks impacting the municipality and its surroundings are: heavy rainfall and torrential rains, drought and forest fires, Erosion, flooding and subsequent quick-clay slides.

These risks are underpinned by the climate projections performed by PIK within the project, highlighting the region will deal with milder and wetter winters, with less snow. These entail great challenges notably for water management in the city exposed to floodings due to these conditions with potential damages on infrastructures, notably for storm water.

[Storm Hans](#) hit Scandinavian countries in August 2023, and resulted in extreme rainfall, floods, and landslides, and severely highlighted the need for these solutions and climate adaptation in the region.



The Guadeloupe Local Adaptation Fund

In Guadeloupe, ADEME, supported by ACTERRA, is developing and testing a Local Adaptation Fund (FLAG). The idea is to gather and reorient public and private budget available locally towards a permanent fund targeting climate adaptation. In September 2023, ADEME launched a project call to test the governance of the Fund and the capacity of local stakeholders to implement concrete and innovative actions in the sectors of tourism and agriculture.



On September 25th 2023, the Bank of the Territories committed alongside **Jérôme Roch from ADEME** to support the FLAG.

An envelope of €150,000 has been allocated to finance: i) decision support engineering, ii) support for the structuring of territorial projects, iii) support for innovation and territorial data. This envelope is in addition to the €300,000 made available by ADEME. Other financial partners like the French Development Agency, the Water Office or the Regional Council of Guadeloupe will support projects according to their relevance.

The call for projects is still in progress and will be closed on November 8th, 2023.

PROGRESS

The following section provides a summary of actions and the latest updates in each Work Package, of submitted deliverables in the past months, and provides you with a link to the deliverables.

WP1 | FEUGA

Innovation ecosystems for transformational adaptation in demonstrators

The specific objectives of WP1 are to i) define a strategy for stakeholders' engagement to drive a co-creation process for transformational adaptation, ii) identify key potential actors, stimulating their active engagement as well as of citizens to foster a co-ownership of the solutions iii) understand perception and decision-making process of stakeholders and citizens, identifying potential barriers to behavioural change iv) promote exchange of practices between demonstrators.

Latest updates

Network on CC Adaptation: coordinating via shared document; FEUGA to focus on within the project, CMCC on the Network liaison

- mapping questionnaire and webinars by Autumn
- technical support from the Mission. Appointing Jan, Charlotte, Oscar and Chiara for the MIP4Adapt platform; *ClimateADAPT platform remains a priority*
- Network on CC Adaptation: mapping tools from TransformAr and sister projects to be shared; defining topics for activities to avoid duplicities, based on available learning stories and best practices

Best practices:

- first draft of the two thematic reports: Change Management and Effective Stakeholder Engagement
- learning stories and peer-to-peer learning, compatibility with 7.5
- next session CM5

Follow-up workshops:

- assessing feedback from the ECCA and the Sustainable Development Solutions Network
- empowering stakeholders: additional measures based on the Review and the best practices forum, focusing on awareness, openness and symmetrical feedback. *D1.3 base*

- financial resources available: coordinating with Demos and WP4
- harmonisation, transversal coordination, efficiency and measurement
- replication and solution monitoring
- interactive innovation and scenario games (using IMPETUS Hot Spot Risk Assessment Tool)

Public Acceptance:

- USC new proposal to discard focus groups but complementing the deliverable with ARSINOE and TRUST projects case learning story
- waiting for the raw results of the DCE
- all demos must share inputs about the sessions with stakeholders and their group dynamics
- case studies REGILIENCE D1.1 'Resilience planning & development needs of regional authorities and stakeholders'

D1.4. | USC/FEUGA (Submitted M24)

Beliefs towards transformational adaptation conceptual map – [Link](#)

This report serves to present the analyses conducted by the research group COSOYPA from the University of Santiago de Compostela, on evaluating the attitudes and beliefs held by stakeholders that may either hinder or facilitate the adoption of behaviours conducive to transformative change. The findings presented herein pertain specifically to the analysis of different workshops and meetings carried out in three of the sites of the project: Galicia, Guadeloupe and Oristano. COSOYPA's assessment focused on discerning stakeholder attitudes and beliefs that could potentially impact their embrace of transformational behaviours as proposed in

adaptation in demonstrators. The core objective of the analysis was to both identify shared elements and discern subtle distinctions within them using a standardized approach. This analytical process is designed to methodically structure and elucidate the available information, thus facilitating a more precise identification of pivotal factors that might impact the reception or dismissal of the proposed solutions. By doing so, this report lays down a robust groundwork to analyse social acceptance. This resource is proposed to support subsequent project phases. The results of this report are expected to yield valuable insights that can significantly benefit both WP6 and WP7. For the WP6, these insights can shed light on how EU citizens perceive the project's solutions and their potential applicability in other EU regions. For the WP7, this report provides a deeper understanding of stakeholder attitudes and preferences, making a meaningful contribution to the evolving climate policy landscape. These insights can be used to tailor planned communication actions, such as social media and the project's public website.

D1.5. | Verhaert (Submitted M24)

2 thematic best practice reports – [Link](#)

2 thematic best practice reports were prepared by Verhaert with inspirational and practical tips & tricks on **i) stakeholder management and ii) change management** in a practical format as demonstrated below. For the complete report, which includes concrete actions to take on both topics, please consult the link above.

TransformAr VERHAERT

BEST PRACTICES: Stakeholder Management

Stakeholder management plays a critical role in ensuring project success by effectively addressing the needs and expectations of key stakeholders. It involves identifying and prioritizing these stakeholders, understanding their requirements, and actively engaging with them throughout the project lifecycle. By doing so, project managers can foster positive relationships, gain valuable insights, and adapt to changes that may arise. This active involvement not only enhances project communication but also enables project teams to adjust their strategies and plans accordingly, resulting in improved project outcomes.

Steps:

1 IDENTIFICATION	2 ANALYSIS	3 PLAN	4 ENGAGEMENT
Identifying stakeholders is a vital step in project management. It involves recognizing the individuals or groups who are relevant to the project and have a vested interest in its success or may be affected by it.	Stakeholder analysis plays a crucial role in project management by providing valuable insights into stakeholders' interests, concerns, and priorities.	Stakeholder planning is a critical step in project management that focuses on addressing the needs, expectations, concerns, and issues of stakeholders in a strategic manner.	Stakeholder engagement is a crucial aspect of project management that emphasizes active involvement of stakeholders throughout the project lifecycle.

Key Tips for Effective Stakeholders Management

Do's:	Dont's:
<ul style="list-style-type: none"> Identify all stakeholders Analyze stakeholders needs, influence and interest Develop a communication plan Engage stakeholders throughout the project lifecycle Address stakeholder concerns/issues Manage stakeholder relationships Build Trust 	<ul style="list-style-type: none"> Ignore stakeholders needs and expectations Overpromise and under deliver Exclude stakeholders Disregard feedback Make assumptions React only when there is a problem

This project has received funding from the European Union's Horizon H2020 innovation action programme under grant agreement 101036683.

BEST PRACTICES: Change Management

Change management is a crucial process that helps organizations navigate and adapt to changes effectively. It involves systematically planning, implementing, and communicating changes to minimize disruption and maximize stakeholders' acceptance. Here are key steps for successful change management:

Prepare and Plan: Begin by clearly defining the change and its objectives. Assess the impact on various aspects, such as processes, systems, and people. Develop a comprehensive plan outlining the steps, timeline, and resources required for the change.

Engage and Communicate: Engage stakeholders throughout the change process to foster ownership and buy-in. Communicate the vision, goals, and expected outcomes of the change. Provide regular updates, address questions, and listen to stakeholders' feedback.

Support and Empower: Provide the necessary support and resources for stakeholders to adapt to the change. Offer training, coaching, and guidance to build their skills and confidence. Empower stakeholders by involving them in decision-making and recognizing their contributions.

Steps:



Key Tips for Effective Stakeholders Management

Do's:

- Build a case for change
- Create a communication plan and roadmap
- Leverage a structural but flexible approach
- Include everyone who might be involved
- Learn from stakeholders' feedback

Don't's:

- Start too late
- Loose your change momentum
- Ignore internal resistance
- Exclude or sideline specific people
- Be silent about your ideas
- Expect a new system to change behavior



This project has received funding from the European Union's Horizon H2020 innovation action programme under grant agreement 101036683.

WP2 | CMCC Integrated biophysical and socio- economic framework for modelling multi- sector dynamics

The objective of WP2 is to develop and implement a methodology as adaptive block for conducting full-scale climate and socio-economic risk assessment for EU regions and communities. Specific objectives are: i) to consolidate a coherent harmonized framework of climate/biophysical modelling data and projections across EU and demonstrators; (ii) to articulate more detailed (e.g. high resolution) modelling assessments of hazards and inter-linkages relevant for transformational adaptation across demonstrators; (iii) to provide an economic evaluation of climate risks for different sectors, (iv) to develop a comprehensive assessment of socio-economic impacts of CC and TA at different EU scales, linking sectorial interdependencies, and cascading effects, (v) to develop a multidisciplinary integrated risk assessment cross-correlating biophysical multi-hazards and macroeconomic implications of CC for relevant sectors and (vi) to prioritise vulnerable KCS and EU regions and provide a robust framework for decision-making and upscaling of solutions established at demonstrator to further areas.

Latest updates

- **D2.1** Ongoing discussion/elaboration on use and implementation of available data (hazard + model impact on flooding/agriculture/tourism/fishery + Integrated Risk assessment) for project activities at DEMO level, their employment at NUTS2 level EU-Wide through (project) web page or digital solution for climate service tool
- **D2.2** SWIM modelling (eco-hydrological processes): validation for Demo regions and contribution towards damage impact assessment
- Tourism Comfort Index for Europe under development

- Preliminary crop yield impact assessment discussed and available from ISIMIP for CMIP6 projections
- **D2.3.** Biophysical impact for Agriculture (consolidated from CMIP5, ongoing for CMIP6), Fishery (consolidated from CMIP5, ongoing for CMIP6) and Tourism (under development), Flooding risks ((under development). Deliverable 2.3 under development to define/describe both biophysical impact projections and Cost-Damage assessment for single sectors
- **D2.4.** Socio-economic model for Sardinia by including relevant KCS (test study): Setting parameterization & inputs.

Ongoing discussion on data (hazard + model impact on flooding/agriculture/tourism/fishery + socioeconomic modelling evaluation + Integrated Risk assessment + prioritization) available at NUTS2 level for the whole EU through web page or digital solution as climate service tool

Validation for Demo regions of SWIM model for eco-hydrological processes and flooding

Modelling assessments from T2.2, other relevant repositories (e.g., ISIMIP - the Inter-Sectoral Impact Model Intercomparison Project, the Climate Data Store of Copernicus) and outcomes of other previous EU projects (e.g., COACCH, PESETA, SOCLIMPACT, H2020_Insurance), have been elaborated to provide a valuation of biophysical damages and expenditures linked to climate hazard categories and sectors relevant to the TransformAr project and the different demonstrators (e.g., river and coastal floods, agriculture, droughts, infrastructure). These have been processed to structure CC biophysical inputs for the socio-economic impact assessment (Task 2.4). Such impact evaluations have been derived and post-processed for there to be translated into meaningful economic parameters (e.g., capital stock damage, sectoral productivity reduction, changes in consumption patterns).

WP3 | ACTERRA

Envisioning transformative pathways for the demonstrators

WP3 will co-develop the adaptive blocks on Adaptive pathway co-construction, Adaptation planning and

Solution combination in region-specific portfolios. Specific objectives include to: (i) co-develop adaptive pathways for developing transformational adaptation in each demonstrator and assess their biophysical, social and economic impacts and robustness; (ii) assess the potential avoided damages and additional co-benefits of transformational adaptation pathways for the society and the economy; (iii) co-define adaptation action plans and combination of actionable solutions for demonstrators; (iv) provide insights of the KCS transformational adaptation related to water-energy-food nexus and energy system designs repercussions.

Latest updates

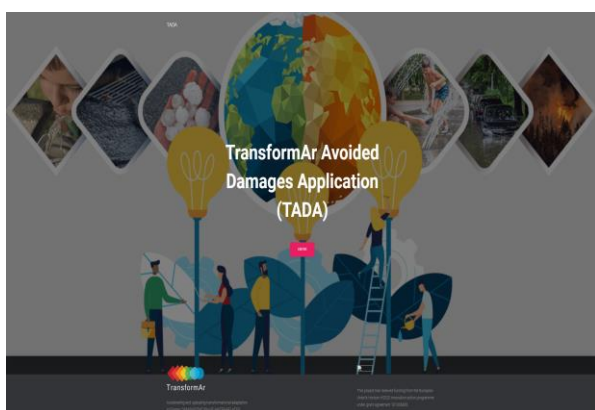
- The [PDF version of the Playbook](#) is updated (new version accessible online on the TransformAr website).
- A first version of the webtool version of the Playbook is available online: <https://app.transformar.eu/> This first version should be revised to fit the reality of workshops.
- The methodology for the task T3.5 "Transformation action plan and combination of solutions" linked to the deliverables D3.7 (methodology) and D3.8 (result of the application of the methodology) is under development (led by ACTERRA)

D3.4 | NCSR (Submitted M22)

Tools on the avoided damages per demonstrator – [Link](#)

The **TransformAr Avoided Damages Framework (TADF)** and the **TransformAr Avoided Damages web-based application (TADA)** are presented for **evaluating and assessing effectiveness or avoided damages of the adaptation pathways** produced in Task 3.2 per demonstrator.

TADA can be found here: [TADA \(demokritos.gr\)](https://demokritos.gr)



In the context of the TransformAr project and the *Task 3.3 - Analysis of avoided damages and other direct benefits of pathways at demonstrator scale*, Avoided Damages are the quantification of potential effectiveness of solutions implemented at demonstrator level to cope with climate change risks. The solutions have been proposed by the demonstrators of the TransformAr project during the compilation of the proposal and have been discussed and agreed upon with stakeholders during the demonstrators' workshops (Task 3.2). The adaptation pathways defined in Task 3.2 were derived to be elaborated in the context of Avoided Damages and utilizing the tools and data compiled in WP2 to estimate the effectiveness of the solutions. Towards the latter, the TADF was compiled and applied to the demonstrators.

In addition, TADA works as a presentation of tools used by the demonstrators, their descriptions and the presentation of results of the solution using Key Performance Indicators (KPIs)³ via an online interface. Moreover, a multicriteria function is accommodating possible replicators to find information on the project impacts at demonstrator level, and the most relevant solutions for their region / hazard / type of solution. The good practices and guidelines for avoiding damages and other direct costs in regional governance scale will be derived from TADA.

WP4 | ADEME

Actionable adaptive solutions implementation

WP4 will implement and test, in demonstrators' Key community Systems, the region-specific portfolios of solutions, composed of actionable cross-sectoral and large-scale adaptive solutions. Some solutions have been preidentified during the project setting-up as they are crucial to tackle territorial vulnerabilities to climate change. These solutions are described below and will be implemented together with solutions selected and combined in WP3. It will demonstrate the contribution of solutions to improve massively resilience in the regions and/or communities and define the replicability potential of the solutions that will be included in the Innovation Packages. The first round of solution implementation will take place between M12 (Milestone 11) and M30, and the second round will start in M30.

Latest updates

- ADEME designed a [tool to support WP task leaders in monitoring their solutions](#) – 21 solutions are expected to be implemented in the demonstrators throughout the duration of the TransformAr project.
- 1-year assessment of implementation of solutions meetings held with all task leaders and relevant demonstrators held in September 2023. Meetings [slides can be found here](#).

Behavioural change and awareness change solutions task lead: Verhaert

Governance solutions task lead: University of Antwerp

Nature-based solutions task lead: CZU

Technological and digital solutions task lead: NTNU

Insurance, financial and economic scheme solutions: University of Antwerp

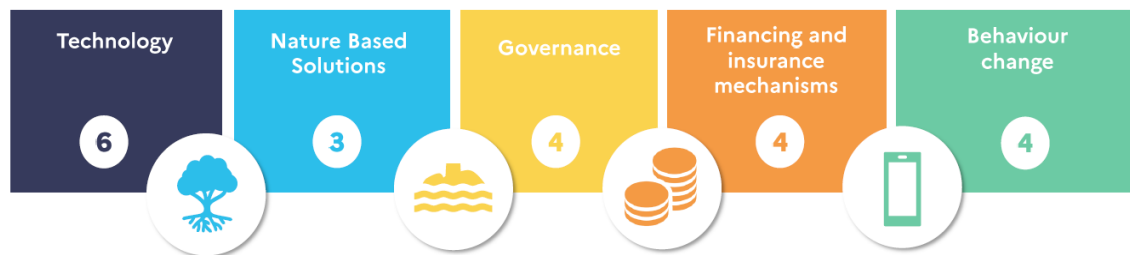


Figure: **Actionable adaptive solutions in TransformAr**

- **WP4 monitoring calendar** : The calendar for other solutions types is [HERE](#) in the Sharepoint.

Accelerating demonstrators' transformational adaptation

WP5 will develop the two adaptive blocks on Monitoring and evaluation and Acceleration of Transformational Adaptation. Specific objectives are as follows: (i) to monitor the progress of implementation at demonstrator scale (ii) to conduct an ex-post assessment of the solutions' contribution to improving resilience in the region and/or community and co-benefits/overall balance; (iii) to ensure ownership of the upscaling of solutions in demonstrators through understanding of opportunities and barriers on accelerating investment and upscale in the demonstrators articulating with the CSA; (iv) to ensure the bankability of TA projects and solutions and financial profitability and independence of demonstrators; (v) to contribute to the accelerating and guiding CCA into investment and decision-making through the WP1 Innovation Ecosystems established.

Latest updates

- 5.1 - Demonstrators are adding to Intermediary reports, there has been some internal reviewing on what is required for these reports. Focus has moved to the progress and monitoring of solution delivery over monitoring of parameters.
- 5.3 and 5.3.1 - literature review is being co-ordinated between UA and WRT, Meeting planned for Autumn 2023, need to identify scope of lit review. Action to develop materials for 50 change agents across Europe and draft framework for interviews will be developed and circulated to demos. Will work with Linda R on green finance & bankability workshop & events (5.4).
- Roel (UA) will be 1.0FTE on TransformAr from January so will have more availability.
- 5.3.2-DCE survey for both Finland and Norway is being designed. This is expected to be delivered by November 2023, with data analysis to be done by LUT and UA.
- 5.4 - UA and WRT now planning workshops for next February. For this purpose, Linda Romanovska has been contacted and will be involved in setting up a workshop with the banking industry. Part of this workshop will be to identify the main contribution of a bankability report.

TIME FRAME (M10 – M42/M48)

- **T5.5 Acceleration (WRT)** – How can we increase understanding of decision makers? (*Risks – lack of clarity over benefit, poor identification of decision makers, lack of collation of events*)
- **T5.4 Bankability (UA)** – Who are the long-term funders of Climate Change Adaptation? (*Risk – poor identification and understanding of buyers*)



- **T5.1 Monitoring (CZU)** – What are you monitoring and how often? (*Risk - lack of quality, continuity, integration...*)
- **T5.2 Ex-post assessment (LUT)** – Is this internal or externally expertise? (*Risks – Quality and quantity of data to make assessment, scope*)
- **T5.3 Ownership (WRT)** – Who are the owners and how are you going to engage with them? (*Risk – poor stakeholder assessment, poor facilitation/engagement, fatigue*)

WP6 | University of Antwerp

Acceptance, building and exploitation of innovation packages

WP6 aims to capitalise, consolidate and integrate the knowledge/resources on Transformational Adaptation (TA) in the 7 project Innovation Packages (Ips). It will achieve the following specific objectives: (i) perform econometric analysis of the acceptance and preference of adaptative solutions with the general public; (ii) transfer the costs and benefits of adaptative solutions from the demonstrator to non-demonstrator sites across Europe; (iii) capitalise, consolidate and integrate the outcomes/knowledge/resources from all WPs, leading to a catalogue of solutions, and guidance documents on transformational adaptation, and the 7 IPs; (iv) define the exploitation, IPR strategy and business model; (v) articulate and feed into the CSA- project platform.

Latest updates

T6.1 Public acceptance (CMCC)

- [D6.1. is available on the TransformAr Sharepoint](#) outlining the set-up and methodology of the discrete choice experiment developed by CMCC. The discrete choice experiment is a survey-based method that asks members of the public to choose between potential adaptation solutions. distribute to 9000 members of the public spread over 6 countries: Spain, Greece, Finland, Norway, Italy and the UK.
- The survey has been fully launched - the soft launch is completed and results of this first launch are promising for the remaining responses.
- The CMCC team will analyse the results as soon as the full launch of the survey is complete.

T6.2. Benefit Transfer (CMCC)

- Andrea Bigano (CMCC) leads T6.2 and notes the following: What will be ultimately feasible for D6.2. in terms of benefit transfer can be ascertained only after the econometric analysis of the DCE has been performed.
- Benefits from the DCE survey can be transferred using standard benefit-transfer methods. The survey is designed to yield WTPs for adaptation actions in six sectors at the national level, deployed by means of different sorts of policy instruments, with two different levels of geographical coverage and two levels of damage protection.

- At a very minimum CMCC can transfer sectoral estimates at the NUTS2 level using household income. This the standard and most used procedure for benefit transfer in the literature CMCC can consider other socio demographic variables such as education, distance from coast, degree of urbanization, which are available at NUTS2 level for EU27 countries.

T6.3.3: a lesson learnt management tool developed by ADEME to be filled in by all partners

T6.4. Exploitation, IPR strategy, business model and planning of identified solutions (FEUGA)

- sections added in the Actionable adaptive solutions section on Click Up - key data from exploitation point of view extracted from the outcomes form (already in Sharepoint)
- work underway on classification of KERs, for the preliminary SoA searches.

D6.6. Preliminary Exploitation Plan

- As requested in the review of TransformAr, D6.6. needs to be resubmitted by the end of 2023 taking the following comments from reviewers into account:
The exploitable products and innovative outputs of the project should be identified. The methodology for exploitation is currently not clearly stated, and there is need of plan for IPRs.

WP7 | Water Europe

Structuring an EU transformational adaptation community of practice

Latest updates

- **COMMUNICATION AND DISSEMINATION**
 - Regular updates on social media accounts (LinkedIn and Twitter) and website are ongoing and should be shared and reposted by all partners of the consortium.
 - Planning for scientific publications - definition of publication strategy (cf. D7.9 mid-term update of the com/diss plan)
 - 2-pager to partners for more impactful com shared and included in D7.9 as well
 - Video script: storyboard second version ready. Final minor changes before production process
 - Dissemination of TransformAr during Water Knowledge Europe: 18-19 October in Brussels
 - **Next actions:**
 - Continue with SM and website updates
 - Project video presentation

D7.9 | Water Europe (Submitted M24)

Mid-term update of the communication and dissemination plan – [Link](#)

This deliverable serves as an updated version of Deliverable 7.2, "Building and Implementation of a Communication Strategy," which was officially submitted in the sixth month of the project. The purpose of this document is to present an updated version of the first strategy that was adopted by all partners with the aim to have the communications activities of the project defined and follow a concrete plan for their implementation throughout the project's four-year duration.

The initial Communication and Dissemination Plan (Deliverable 7.2) was designed to be a dynamic document, evolving over the lifespan of the project. It laid out how the project would communicate with external parties and key target audiences while defining the mechanisms needed to ensure the project's long-lasting visibility beyond its conclusion. The deliverable 7.9 builds on the structure and content of the initial plan, incorporating updates related to:

- Stakeholders' groups and activities.
- Activities carried out for each project's communication and dissemination tool, e.g., the website, social media, newsletters, promotional materials, publication strategy.
- Joint activities carried out with sister projects and projects from the Mission Adaptation to Climate Change.
- Assessment strategy enriched with current figures.

COMMUNICATION GUIDANCE FOR ALL TRANSFORMAR PROJECT PARTNERS

Introduction

This 2-pager aims to gather guidelines, tips and recommendations regarding communication activities within the project to support partners. It has been added in the updated Communication and Dissemination plan (D7.2) as an annex.

We would like to provide partners with concrete guidelines to inform them about what exist and they could support in terms of communication/dissemination activities, and how they could contribute to a more impactful communication on TransformAr achievements.

1. What to communicate about?

Content wise:

- Solutions implemented in your Demonstrator, to reach transformational adaptation
- Local stakeholders engaged in the project activities
- Your adaptation pathways
- Content on the innovations of the project and their contribution to transformational adaptation, insist on what makes your work innovative
- Promote your findings, deliverables and concrete tools developed under TransformAr!

2. Resources that you can use

TransformAr has **3 sister projects** with which we collaborate a lot, notably on communication and dissemination activities. It includes REGILIENCE, a Coordination and Support Action (CSA), which leads the collaboration.

	TransformAr website	REGILIENCE website	ARSINOE website	IMPETUS website
	TransformAr	REGILIENCE	ARSINOE EU	Climate Impetus
	@TransformarEU	@regilience	@ARSINOE EU	@ClimateImpetus
	-	Regilience	Arsinoe eu	-
	-	-	arsinoe eu	-

Common newsletter to the 4 projects **“The Climate Resilience Post”**, released quarterly: <https://regilience.eu/newsletter/>

Newsletter archive to see latest issues: <https://regilience.eu/newsletter-archive/>

Other projects, platforms, initiatives related to TransformAr communications:

Name	Website/LinkedIn	Link with TransformAr
MIP4ADAPT	LinkedIn	Project in charge of the development of the Mission Implementation Platform
Climate-ADAPT	Climate-ADAPT	Results and content to be published on the platform
EU Mission portal	Portal	Gathers tools, info about Mission, News&Events, Mission success stories.
EU Adaptation Community	Adaptation Community (restricted access)	Mission CoP with forums to share content with Mission charter signatories. Contact Jérôme Oudart (EQY) if you want to register to have access.

3. How to help communicate on social media?

- Follow the different accounts above with your organisation's and your own accounts
- Share the posts from TransformAr account to maximise impacts of the posts
- Propose your own content and remember to also use your local language:
 - By posting with your social media account and **tagging TransformAr account** so that we can share your post as well;
 - By directly proposing content (article, infographics, surveys etc.) to TransformAr social media team by email (EQY/WE) so that we can prepare a post or support you in designing/writing the content.
- Invite colleagues and LinkedIn/Twitter contacts to like and follow TransformAr account

How can we support you?

- Help you write an article about a workshop, an event or any initiative related to the project that will be added on TransformAr's website

4. Participation at events

- Past and relevant upcoming events are listed on TransformAr website: [TransformAr - Events](#)
- Inform the **coordination and communication team** (UA/EQY/WE) of any participation to events you expect to attend where you will (re)present TransformAr
- Ask for support to communication team (EQY/WE) to **get visuals** (rollup banner, flyers etc.). Some are already available on [TransformAr Knowledge Center](#).
- If you need to prepare a presentation, you can **refer to past presentations** used in events available on the sharepoint: [External meetings and events](#) (TransformAr - Documents\2. Meetings\External meetings and events).
- Create a folder in [External meetings and events](#) and **add content** (presentation, flyers, minutes, pictures) in it.

How can we support you?

- Before the event – Communicate about the event and specific session you might be presenting about TransformAr and prepare visuals
- During – Post on social media
- After – Communicate about content presented during the event and upcoming

5. Publications

- A **publication strategy** will be included in the update of the Communication and dissemination plan ([D7.9](#)). You can refer to it for good practices.
- Note that TransformAr has a [Zenodo Community](#) where you can submit relevant publications

Contacts

Organisation	Name	Mail	Role
Euroquality	Jérôme Oudart	jerome.oudart@euroquality.fr	Social media
Water Europe	Ana de León	ana.deleon@watereurope.eu	Website, visuals

WP8 | University of Antwerp

Project management

Latest updates

- Dates of CM5: from Tuesday 07/11 to Thursday 09/11 included. **Agenda and logistics information packages are available in the SharePoint** (folder 2. Meetings\Consortium meetings\5. CM5 - Egaleo - November 2023).
- Plenary session for the feedback on the review of the first reporting period was held on 12/09 by EQY. The **review of the report and recording of the session are available in the Periodic Report 1 folder** on the project SharePoint. **Second payment will soon be transferred by the University of Antwerp.**
- The joint review with the European Commission and assigned reviewers of cluster projects – Regilience, ARSINOE, IMPETUS and TransformAr – went well. UA and EQY were present. Regilience will follow up with the review report.
- **UA sent the response to review by email to the PO and on the platform**, which includes a plan on how to tackle improvements required in the review report for the next project period.
- EQY asked Demonstrators for ideas on how to provide more support to the project concrete implementation and impact on a [shared document](#) before CM5.